

Product Catalog

# PROFESSIONAL



**JBL**

**SELENIUM**

by **HARMAN**



JBL Selenium has a wide line of products for the professional sound market. The brand's quality recognition is your guarantee that the products will perform extremely well in small, medium and large-size PA applications.

- Music trucks
- Mobile DJ's
- Stadiums
- Movie Theaters
- Performance Theaters
- Theme Parks
- Restaurants/bars/clubs
- Houses of Worship
- Hotels and Convention Centers Corporate AV



## PROFESSIONAL LINE

---

SUBWOOFERS

MIDBASS

WOOFERS

COMPRESSION DRIVERS

HORNS

SUPER TWEETERS



# SUBWOOFER

LINE



18SWS1000

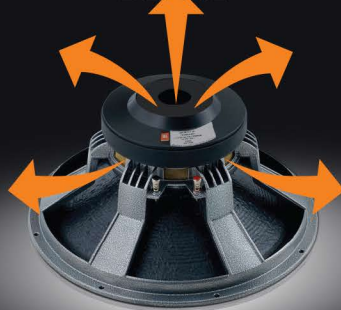
## FEATURES

- Recommended for use as a subwoofer in a bass reflex or horn loaded cabinets.
- Capabilities: High power handling, Large linear excursion.
- Bandpass extension into the very low frequency zone.
- High power output with low distortion.
- Magnetic assembly was designed with Finite Element Analysis (FEA) for precise utilization and distribution of the magnetic field.
- Double poly-cotton spider for precise centering and increased linear displacement of the cone & coil.
- 4" diameter spun laced fiberglass former withstands high temperatures and is mechanically strong.
- Cone is reinforced with non pressed synthetic fibers that greatly improve mechanical stability during large excursions.
- Fabric surround treated with rubberized materials for greater durability, better damping, and reduced standing waves.
- Exclusive MCS™ - Multi Cooling System for high SPL with less power compression.
- Die-cast Aluminum frame is durable and made to perform.
- High strength structural adhesives combined with materials that have good thermal resistance increase durability and reliability.

SUSPENSION  
DETAIL



COOLING  
SYSTEM  
DETAIL



MODEL	15SWS1100	15SWS1000	15SWS800	18SWS1100	18SWS1000	18SWS800
Diameter	15"	15"	15"	18"	18"	18"
Impedance (Ω)	8	8	8	8	8	8
RMS (W)	1,100	1,000	800	1,100	1,000	800
Musical Program (W)	2,200	2,000	1,600	2,200	2,000	1,600
SPL 1W @ 1m (dB)	95	95	93	97	96	95
Frequency Resp. @ -10dB (Hz)	35 to 3,500	38 to 2,000	35 to 1,500	30 to 3,000	37 to 2,000	30 to 1,500
Resonance (Hz)	37	36	37	34	37	32
Voice Coil diameter in. (mm)	4 (100)	4 (100)	4 (100)	4 (100)	(4) 100	(4) 100
Voice Coil	Edge wound Al	4 Layer Al	4 Layer Cu	Edge wound Al	4 Layer Al	4 Layer Cu
Magnet Weight oz. (g)	120 (3,400)					
Basket	Die cast aluminum with epoxy finish					

# MIDBASS LINE



## MB

- For midbass boxes that require high power handling, efficiency, high fidelity, and low distortion.
- Extremely versatile these speakers can be used in two-way, three-way and line array systems.
- Magnet structure was designed with Finite Element Software (FEA) so that the magnetic field was optimized and evenly distributed. The 12" model has a copper shorted turn on the pole piece to lower distortion and extended the upper frequency response.
- Specially treated paper cone is reinforced with special fibers making it lighter, stronger and better sounding in the midbass.
- Edge treated surrounds are either accordion or m-roll style to increase linearity during large excursions. Added advantages include the reduction of standing waves and improved acoustic coupling.
- Efficient venting cools the voice coil which reduces power compression, increases reliability and raises maximum SPL.
- Low profile die cast aluminum frame is easier to install in smaller, shallower and horn loaded enclosures.
- High temperature structural adhesives form a material bond with high shear strength greatly improving the durability and reliability of the product.

## W4P

- Recommended for use in systems that require flat frequency response with extended range from the midbass to the upper midrange.
- An excellent choice when small unobtrusive speakers are called for in houses of worship, hotels, schools, clubs, restaurants and retail localizations.
- Durable copper voice coil on Kapton® is large enough to handle a lot of power but light enough for extended frequency response.
- Special resins are used to treat the long fiber paper cone increasing strength and improving sound quality.
- Cloth (8") and foam (6") half roll surrounds are treated to improve stability during high excursions, increase acoustic coupling and help dampen standing waves.
- Stamped steel epoxy coated frame is resistant to oxidation and won't bend even under harsh conditions.

Kapton® - Trademark Du Pont

					
MODEL	8MB4P	10MB3P	12MB3P	6W4P	8W4P
Diameter	8"	10"	12"	6"	8"
Impedance (Ω)	8	8	8	8	8
RMS (W)	250	300	500	100	150
Musical Program (W)	500	600	1,000	200	300
SPL 1W @ 1m (dB)	97	100	101	91	96
Frequency Resp. @ -10dB (Hz)	80 to 5,000	150 to 12,000	90 to 4,000	80 to 9,000	100 to 6,500
Resonance (Hz)	105	80	61	76	107
Voice Coil Diameter in.(mm)	1.8 (47)	3 (75)	2.4 (61)	1.3 (32)	1.8 (47)
Voice Coil	Kapton®/Aluminum			Kapton®/Copper	
Magnet weight oz.(g)	45 (1,280)	91 (2,570)	93 (2,640)	20 (560)	44 (1,240)
Frame Material	Die cast aluminum with epoxy finish			Stamped steel epoxy finish	

# WOOFER

LINE

## WS 600



15WS600

- Recommended for smaller low frequency cabinets where high power handling, seamless linearity and low distortion sound is required.
- Ideal for touring and fixed installations. Recommended for use in sidefill and stage monitor speakers.
- Magnet assembly design optimized by finite element software (FEA) to improve the control of the flux in the gap.
- Double spiders control the alignment of the cone during high excursions.
- 4" diameter Copper voice coil on a high temperature Kapton® former for increased power handling and structural durability.
- Composite cellulose cone that is reinforced with long synthetic fibers improves mechanical stiffness, damping, and reduces standing waves.
- Efficient vented cooling system reduces power compression and improves efficiency.
- High temperature structural adhesives permanently bonds components increasing durability and reliability.



18WS600



12WS600

			
MODEL	12WS600	15WS600	18WS600
Diameter	12"	15"	18"
Impedance (Ω)	8	8	8
RMS (W)	600	600	600
Musical Program (W)	1,200	1,200	1,200
SPL 1W @ 1m (dB)	95	97	98
Frequency Resp. @ -10dB (Hz)	45 to 3,000	40 to 3,500	35 to 3,000
Resonance (Hz)	46	35	33
Voice Coil Diameter in. (mm)	4 (100)	4 (100)	4 (100)
Magnet Weight oz.(g)	94 (2,700)	94 (2,700)	94 (2,700)
Frame Material	Die cast aluminum with epoxy finish		

Kapton® - Trademark Du Pont





15PW7

## PW

- Recommended for use in small and medium-size venues where high performance reproduction of the critical midrange frequencies are desired.
- The right choice for two way loudspeakers that are used for sound reinforcement in auditoriums, ballrooms, nightclubs, and live music stages.
- Precision wound copper voice coil is bonded to a Kapton® former and coated so that it holds its structural shape under high power conditions.
- Paper cone reinforced with long fibers is specially treated to ensure faithful reproduction and tone in the voice band.
- Accordion edge fabric surround is specially treated to reduce fatigue and lower distortion.
- Aluminum dust cap dissipates heat from the voice coil improving power handling and reducing power compression. No aluminum dust cap on (8PW7, 10PW7, 12PW7, and 15PW7).
- Mechanically strong and weather resistant epoxy coated stamped steel frame.



8PW7

					
MODEL	8PW7	10PW7	12PW7	15PW7	15PW6
Diameter	8"	10"	12"	15"	15"
Impedance (Ω)	8	8	8	8	8
RMS (W)	140	150	250	300	400
Musical Program (W)	300	300	500	600	800
SPL 1W @ 1m (dB)	93	95	95	97	97
Frequency Resp. @ -10dB (Hz)	70 to 8,000	60 to 4,000	40 to 4,500	40 to 4,500	60 to 4,000
Resonance (Hz)	79	67	42	43	37
Voice coil Diameter in.(mm)	1.3 (32)	1.8 (46)	2.4 (60)	2.4 (60)	3 (75)
Magnet Weight oz. (g)	20 (560)	32 (920)	46 (1300)	46 (1300)	86 (2,440)
Frame Material	Stamped steel with epoxy finish				

Kapton® - Trademark Du Fort.

# COMPRESSION DRIVER

## LINE

### PHENOLIC

- Recommended for midrange applications in multi-way PA's, stage monitors, side fills and high SPL car audio systems.
- High sensitivity, low distortion and smooth response.
- Precisely formed phenolic diaphragm produces high fidelity sound through out the midrange.
- Diaphragm voice coil is bonded to Kapton™ with high temperature adhesives to increase durability and raise power handling.
- "Phase Plug" is an acoustic transformer with optimized geometry to reduce phase cancellations.
- Magnetic Fluid in the gap (models D305 and D405) helps center the coil, improves heat dissipation, and reduces distortion.
- Quick change drop in diaphragm for easy repair.



D305



D250-X



D405



D200

				
MODEL	D200	D250-X	D305	D405
Throat diameter	1"		2"	
impedance (Ω)	8		8	
RMS (W)	50 <sup>(1)</sup>	100 <sup>(2)</sup>	75 <sup>(2)</sup>	100 <sup>(2)</sup>
Musical Program (W)	100	200	150	200
SPL 1W @ 1m (dB)	107	107	110	110
Frequency Resp. @ -10dB (Hz)	500 to 7.000	400 to 9.000	400 to 9.000	300 to 7.000
Rec. a 12 dB/8° (Hz)	500	500	500	
Voice coil diameter in(mm)	51	51	75	100
Magnet weight oz.(g)	290	332	1.600	2.640
Housing material	Plastic	Aluminum		Plastic
Horn connection	Screw on			Bolt on

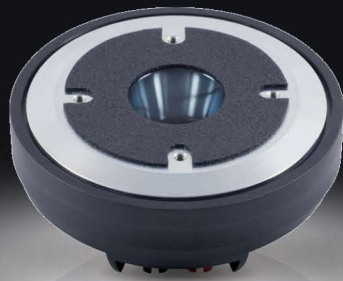
# COMPRESSION DRIVER LINE



D202Ti



D220Ti



D3305Ti



D408Ti

## TITANIUM

- Recommended for use in high performance compact, two-way, multi-way and line array systems.
- For use in sound reinforcement, side fill and stage monitor loudspeakers.
- World class drivers with excellent performance.
- High sensitivity and linear frequency response.
- Pure TITANIUM Diaphragm is accurately shaped to produce high frequencies with clarity.
- Innovative IPF® - Impregnated Polymer Fiber (models D3300Ti, D3305Ti) diaphragm surround reduces ringing and makes the high frequencies more linear.
- DPD® - Driver Protection Device protection circuit (models D3300Ti, D3305Ti), protects the compression driver by reducing the input power during clipping and overload conditions.
- Precisely designed "Phase Plug" is an acoustic transformer that helps prevent phase cancellations.
- Copper shorting ring on the pole piece reduces the modulation of the magnetic field, lowers distortion and increases high frequency output.
- Magnetic Fluid in the gap (models D408Ti, D3300Ti, and D3305Ti) lowers distortion, helps to center the voice coil and wicks away heat.
- Repair of the driver is easy because the quick change diaphragm indexes to center and has a unique gold-plated contact system (models D3300Ti and D3305Ti).

					
MODEL	D202Ti	D220Ti	D220Ti OMF	D3305Ti DPD	D408Ti
Throat diameter	1"			2"	
Impedance (Ω)	8				
RMS (W)	60 <sup>1</sup>	80 <sup>1</sup>		75 <sup>2</sup>	125 <sup>3</sup>
Musical Program (W)	120	160		150	250
SPL 1W @ 1m (dB)	106	109		108	111
Frequency Resp. @ -10dB (Hz)	1,000 to 20,000	1,000 to 21,000		500 to 20,000	400 to 20,000
Rec. X-over, 12dB/oct min. (Hz)	1,500			800	
Voice coil diameter in (mm)	1.7 (44)			3(75)	4 (100)
Voice coil	Kapton®/CCAW			Kapton®/CCAW edgewound	
Magnet Weight oz.(g)	8 (210)	24 (675)		57(1,600)	93 (2,640)
Housing material	Plastic				
Horn connection	Screw on	Screw on		Bolt on	

(1) Xover 2,000Hz 12dB/oct (2) Xover 800Hz 12dB/oct (3) Xover 1,200Hz 12dB/oct

Kapton® - Trademark Du Pont



## TWEETER/ HORN DRIVER



DT150

### DRIVER TWEETER

- Recommended for use in the upper midband and higher in systems that require extended frequency response. A good choice for use in compact multi-purpose speakers.
- Compact device with reliable performance and high efficiency.
- 1" (25mm) convex dome phenolic diaphragm.
- CCAW - copper clad aluminum - Voice coil.
- 60° H x 60° V coverage angle with included HM11-25 screw on horn.
- Repair is simple and easy.

MODEL	DT150
Throat diameter	1"
Impedance (Ω)	8
RMS (W)	75 <sup>1</sup>
Musical Program (W)	150
SPL 1W @ 1m (dB)	108
Frequency Resp. @ -10dB (Hz)	1,500 to 15,000
Min. X-over Freq. 12dB/oct. (Hz)	4,000
Voice coil Diameter in. (mm)	1" (25)
Magnet weight oz. (g)	10 (290)
Housing material	Plastic
Horn connection	Screw on

1)Xover 4,000Hz 12dB/oct

## LONG THROW



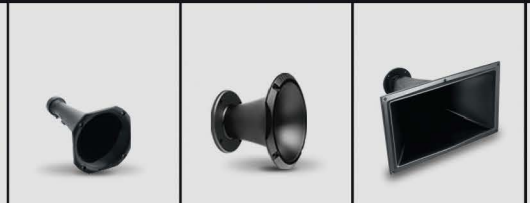
HL 14-25



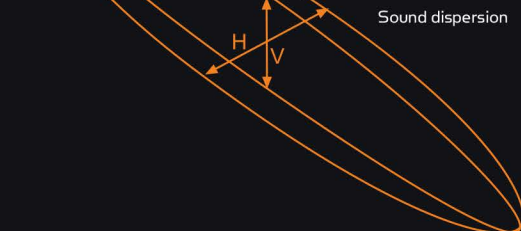
## HORN LINE

### FEATURES

- Ideal for sound reproduction in small, medium and large-size environments.
- Several models available with different sound dispersion designed to fit almost any application.
- Optimized to increase directivity which raises max SPL, and to improve loading of the driver which magnifies efficiency.
- Designed to couple with JBL Selenium drivers to produce high clarity sounds.



MODEL	HL 14-25	HL 14-50N	HL 4750-SLF
Throat	1"	2"	2"
Material	Plastic	Aluminum	Fiberglass
Sound Dispersion HxV	45° x 45°	45° x 45°	40° x 20°
Low Frequency Limit. (Hz)	600	600	400
Driver Connection	Screw on	Bolt on	Bolt on
Width in. (mm)	6.1 (156)	6.1 (176)	17.5 (445)
Height in. (mm)	6.1 (156)	6.1 (165)	11 (280)
Length in (mm)	10.1 (258)	5.1 (134)	13.8 (352)



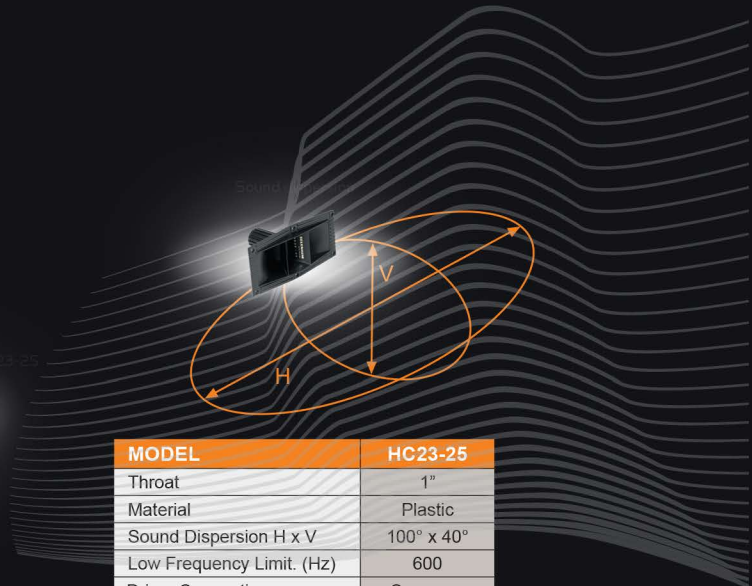
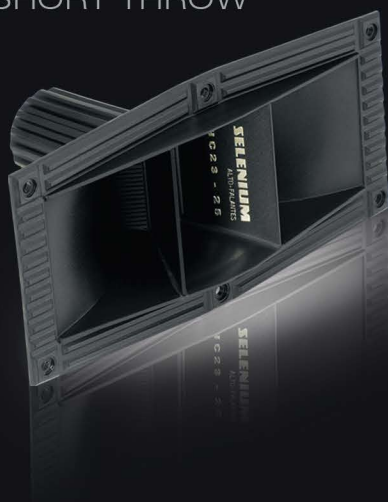
Sound dispersion

## MEDIUM THROW



					
MODEL	HM11-25	HM17-25	HM25-25	HM3950-SLF	HM4750-SLF
Throat	1"	1"	1"	2"	2"
Material	Plastic	Plastic	Aluminum	Fiberglass	
Sound Dispersion HxV	60° x 60°	60° x 40°	90° x 60°	60° x 30°	90° x 40°
Low Frequency Limit (Hz)	1,200	1,500	1,200	400	400
Driver Connection	Screw on	Screw on	Screw on	Bolt on	Bolt on
Width in (mm)	4.5 (115)	6.3 (160)	10.8 (274)	15.3 (390)	17.5 (445)
Height in (mm)	4.5 (115)	5.7 (145)	6.5 (164)	8.1 (206)	11.4 (290)
Length in (mm)	3 (75)	4.1 (103)	5.9 (151)	9.2 (234)	8.3 (210)

## SHORT THROW



MODEL	HC23-25
Throat	1"
Material	Plastic
Sound Dispersion H x V	100° x 40°
Low Frequency Limit. (Hz)	600
Driver Connection	Screw on
Width in. (mm)	10 (254)
Height in. (mm)	5 (128)
Length in. (mm)	5.7 (145)

# SUPER TWEETER

LINE

## FEATURES

- Ideal super tweeter when the reproduction of high frequencies must define the instruments.
- Recommended for PA systems, stage monitors and most sound reinforcement systems in general.
- Extremely high sensitivity and lower distortion.
- The geometry of the magnetic circuit was optimized with Finite Element Analysis (FEA) in order to efficiently utilize and distribute the magnetic field in the gap.
- The Phenolic diaphragms ability to hold it's shape is key to the production of high fidelity, high frequency sound.
- Durability of the super tweeter is increased by using a high temperature voice coil that's bonded to a Kapton® former.
- Components are bonded with high temperature structural adhesives to increase durability and improve reliability.
- Easy diaphragm replacement for faster repairs.



ST350

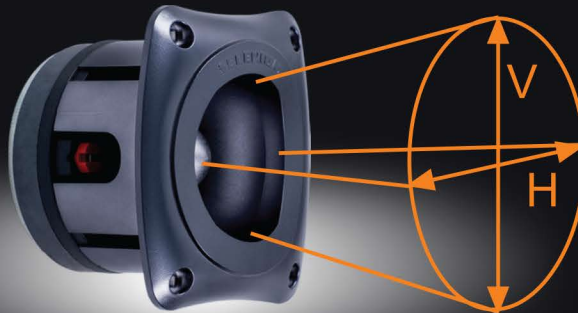


ST304



ST400BLK

## SOUND DISPERSION



				
MODEL	ST200	ST304	ST350	ST400 BLK
Impedance (Ω)	8	8	8	8
RMS (W)	70 <sup>(1)</sup>	40 <sup>(2)</sup>	100 <sup>(2)</sup>	150 <sup>(2)</sup>
Musical Program (W)	140	80	100 <sup>(2)</sup>	150 <sup>(2)</sup>
SPL 1W @ 1m (dB)	105	106	111	111
Frequency Resp. @ -10dB (Hz)	2,000 to 20,000	3,500 to 18,000	2,500 to 20,000	3,000 to 20,000
Voice Coil Diameter	1.8 (46)			1.7 (42)
Sound Dispersion HxV	40° x 40°		120° x 40°	40° x 40°
Magnet weight	8 (220)	11 (320)	17 (470)	15 (430)
Diaphragm	Phenolic			
Housing material	Plastic			